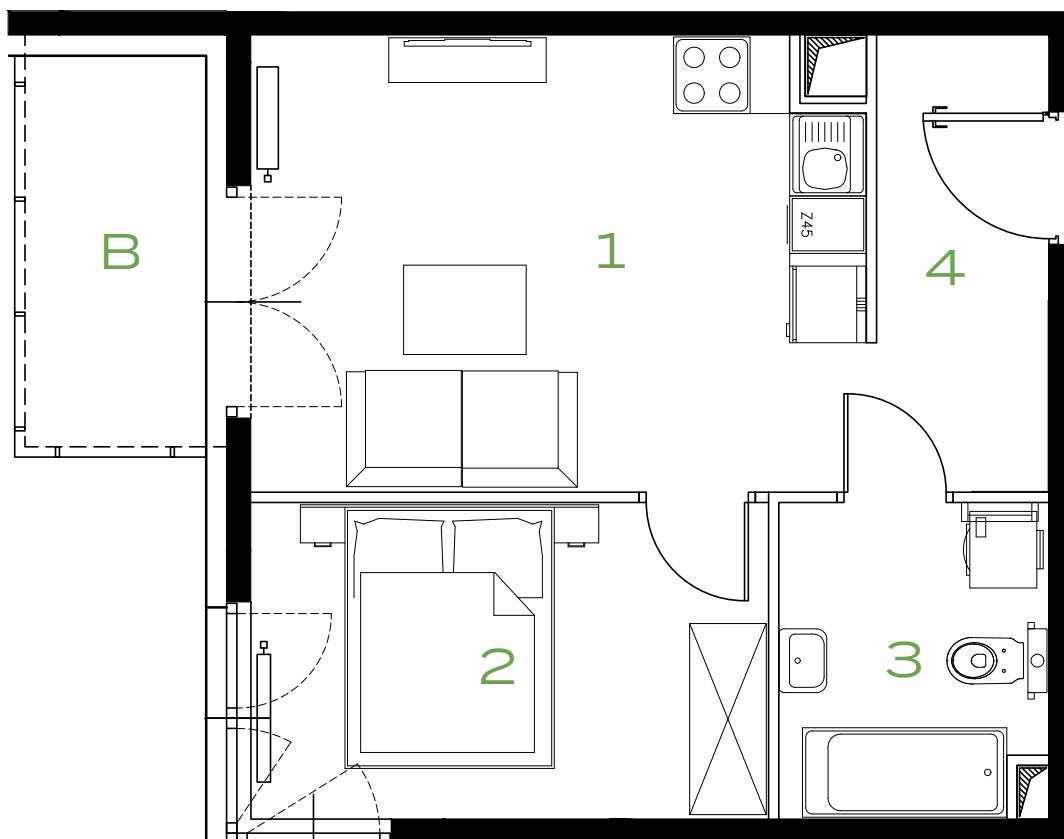
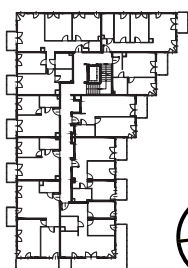


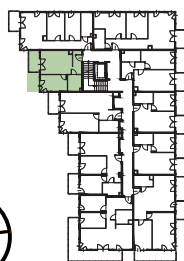
**2 POKOJE | 36.60 m<sup>2</sup>**


Przedstawiona aranżacja lokalu jest przykładowa, rysunki w tym zakresie mają charakter poglądowy.

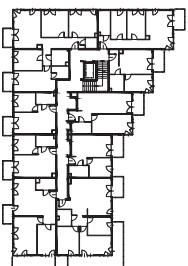
49



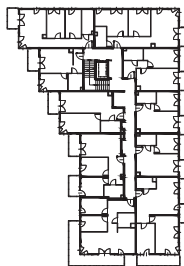
47



53



51



|   |                 |                            |
|---|-----------------|----------------------------|
| 1 | POKÓJ Z ANEKSEM | <b>16.86 m<sup>2</sup></b> |
| 2 | POKÓJ           | <b>9.96 m<sup>2</sup></b>  |
| 3 | ŁAZIENKA        | <b>5.02 m<sup>2</sup></b>  |
| 4 | PRZEDPOKÓJ      | <b>4.76 m<sup>2</sup></b>  |
| B | BALKON          | <b>4.30 m<sup>2</sup></b>  |